

# Emergency Preparedness & Response

## 5 February 2020



# Disease outbreaks in Tanzania

- No new outbreaks reported in the country for the past 8 weeks
  - Dengue fever
  - Cholera
  - Malaria
  - Measles
- No alerts of diseases of public health concern during the week

# Updates- WHO: Coronavirus

- (As of 4 February, 6AM Geneva Time)
  - **SITUATION IN NUMBERS total and new cases in last 24 hours**

## Globally

- **20630 confirmed (3241 new)**

## China

- **20471 confirmed (3235 new) 2788 severe (492 new)**
- **425 deaths (64 new)**

## Outside of China

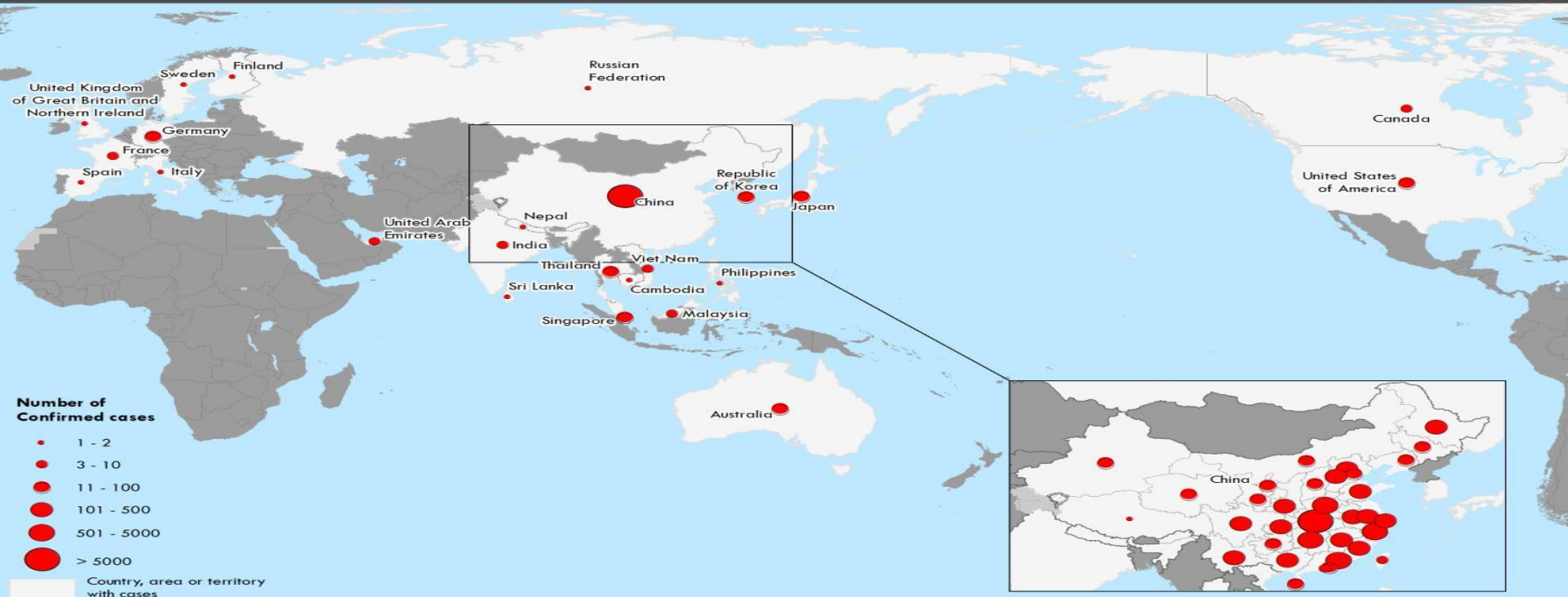
- **159 confirmed (6 new) 23 countries**
- **1 death**

## WHO RISK ASSESSMENT

- **China Regional Level Global Level**
- **Very High High  
High**

# Countries, territories or areas with reported confirmed cases of 2019-nCoV, 4 February 2020

Distribution of 2019-nCoV cases as of 4 February 2020



# Priorities for stopping transmission and mitigating the impact of 2019-nCoV globally

- **Limit human-to-human transmission**
  - Reduce secondary infections amongst close contacts and health care workers
  - Prevent transmission amplification events and super spreading events
  - Prevent further international spread
- **Identify, isolate and care for patients early**
  - Equip countries to detect, isolate and care for infected patients
  - Provide optimized care
- Reduce transmission from animal source
  - Identify animal source(s) and limit exposure
- Address critical unknowns
  - Clinical severity, extent of transmission and infection, treatment options, diagnostics, therapeutics and vaccines
- Communicate critical risk and event information to all communities & countering misinformation
- Minimize social and economic impact through multisectoral partnerships

# 2019nCoV: Countries prioritization

Based on flights and passenger volume, the following 3 levels of priority have been established:

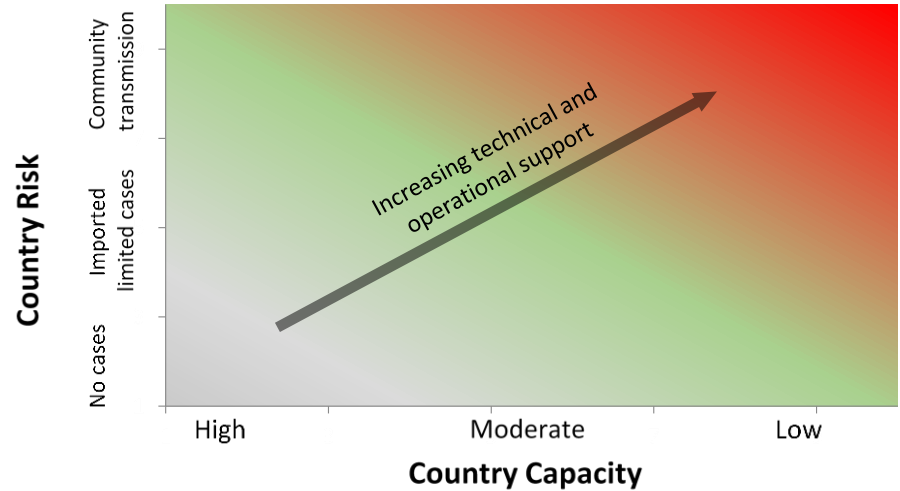
- Priority 1- South Africa, Mauritius, Ethiopia, Kenya, Uganda, Ghana, Nigeria, Zambia, Tanzania, Algéria, Angola, Cote d'Ivoire et DRC
- Priority 2 - Rwanda, Madagascar, Guinea Conakry, Zimbabwe, Senegal, Seychelles, Equatorial Guinea, Gabon, Mauritania and Mozambique
- Priority 3 – remaining countries.

Guidance for strengthening preparedness to countries:

- Strengthen surveillance for rapid detection of new cases at points of entry and health facilities
- Support laboratory capacity to perform confirmatory tests for n-CoV
- Use non-pharmaceutical interventions for rapid containment and prevention of spread of infection.
- Ensure appropriate case management and infection prevention and control measures are in place
- Maintain communication with the public to mitigate panic and to encourage individuals with symptoms to seek medical attention.

# 2019-nCoV Strategic Response Plan

- **Country operations:**
  - Country Coordination
  - Community engagement
  - Surveillance and case investigation
  - Points of entry
  - Laboratories
  - Infection prevention and control
  - Case management
  - Multisectoral engagement
  - Logistics and supply management



# nCoV: Tanzania Preparedness

- MoH internal coordination: preparing contingency plan
- Multisectoral Ministerial meeting with China Ambassador
- PS SADC meeting to follow up on countries preparedness
- WHO checklist submitted : [..\..\2019 nCov\Checklist\Final\\_nCoV\\_Country readiness checklist \(1\) Filled Tanzania mainland.xlsx](#)
- POE screening going on JNIA, KIA
- Laboratory gaps identifies submitted to WHO
- Technical material shared with MoH & partners
- Identify isolation and treatment site: DSM –Kigamboni, Temeke, Kilimanjaro , Mwanza
- Identify high risk regions: DSM, Kilimanjaro, Arusha, Kigoma, Mwanza, Mbeya, Dodoma, Tanga, Geita, Mara



## **Updates- WHO: DRC EVD Outbreak: As of 1 February 2020**

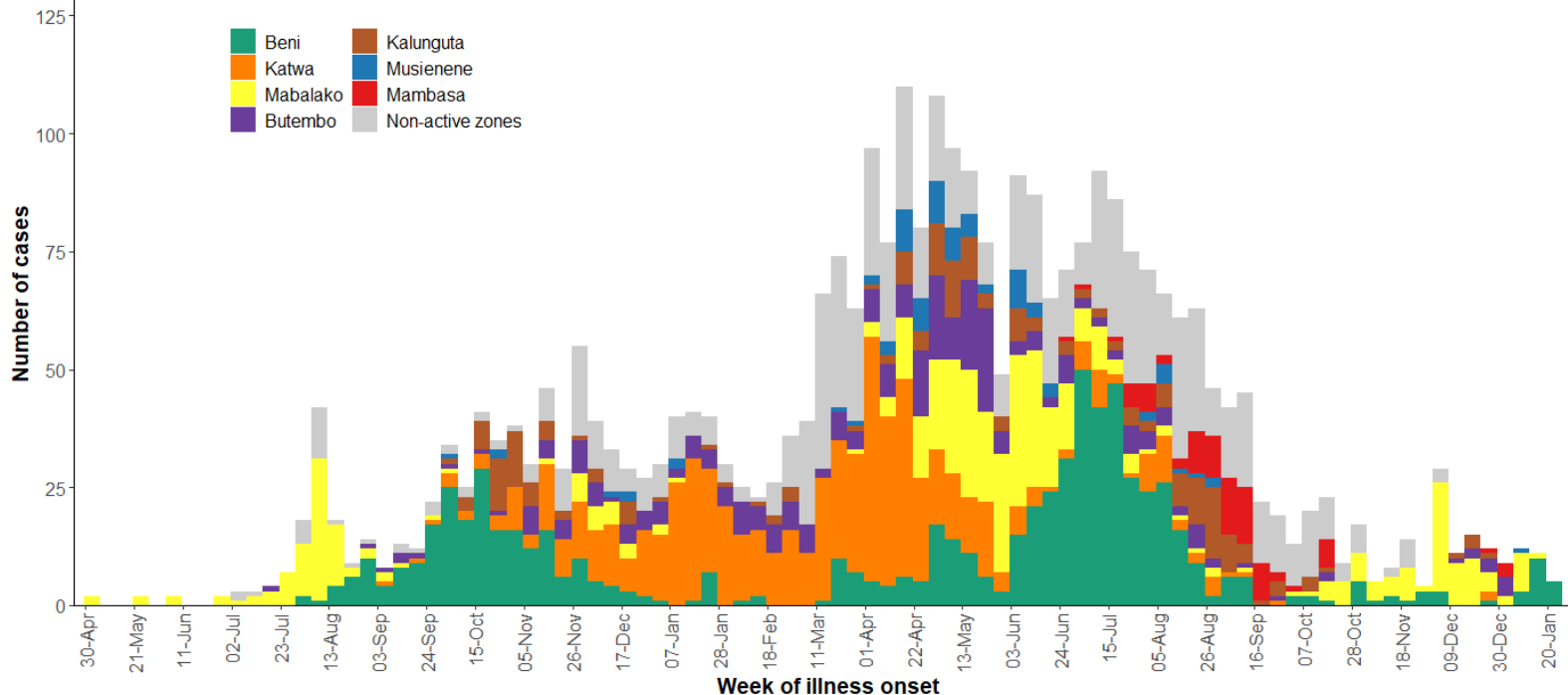
- **3418 EVD cases, (3 305 confirmed and 123 probable cases) 2250 cases died (overall case fatality ratio 64%).**
- **5% (172) are health care workers.**
- **Contact tracing is ongoing in three health zones. A total of 2 374 under ,2 053 (86.5%) have been seen in the past 24 hours**
- **From 20 to 26 January 2020, four new confirmed cases of Ebola virus disease (EVD) were reported in Beni Health Zone in North Kivu Province, Democratic Republic of the Congo.**
- **NO EVD case outside DRC**

# DRC epidemic curves by health zone

(health zones with cases report cases in last 42 days - data as of 28 January)

## Epidemic curve by active health zones

Health zones with cases in the last 42 days specified by color



3421 confirmed and probable cases, reported as of 2020-01-28. 163 cases missing date of onset and not shown.

Non-active zones include: Mandima, Oicha, Masereka, Tchomia, Komanda, Vuhovi, Kyondo, Mutiwanga, Biema, Nyakunde, Manguredjipa, Kayna, Rwampara, Lubero, Bunia, Alimbongo, Ariwara, Goma, Nyiragongo, Lolwa, Mwenga, Pinga

\*Data in recent weeks are subject to delays in case confirmation and reporting, as well as ongoing data cleaning.

# EVD Summary of highlights

## Opportunities

- Encouraging signs in trend of the outbreak
- Overall better surveillance indicators
- Geographical containment
  - 28 cases reported in 5 health areas of 3 health zones, in past 21 days
- No further cases reported from clusters Mambasa, Kalunguta and Katwa
  - Investigations ongoing

## Challenges

- Nosocomial transmission remains a driver of the outbreak
- Contact tracing of co-patients remains a challenge
- In past 7 days, none of the 5 new EVD cases were under surveillance
  - Reported as being vaccinated, opportunity for collaboration?